

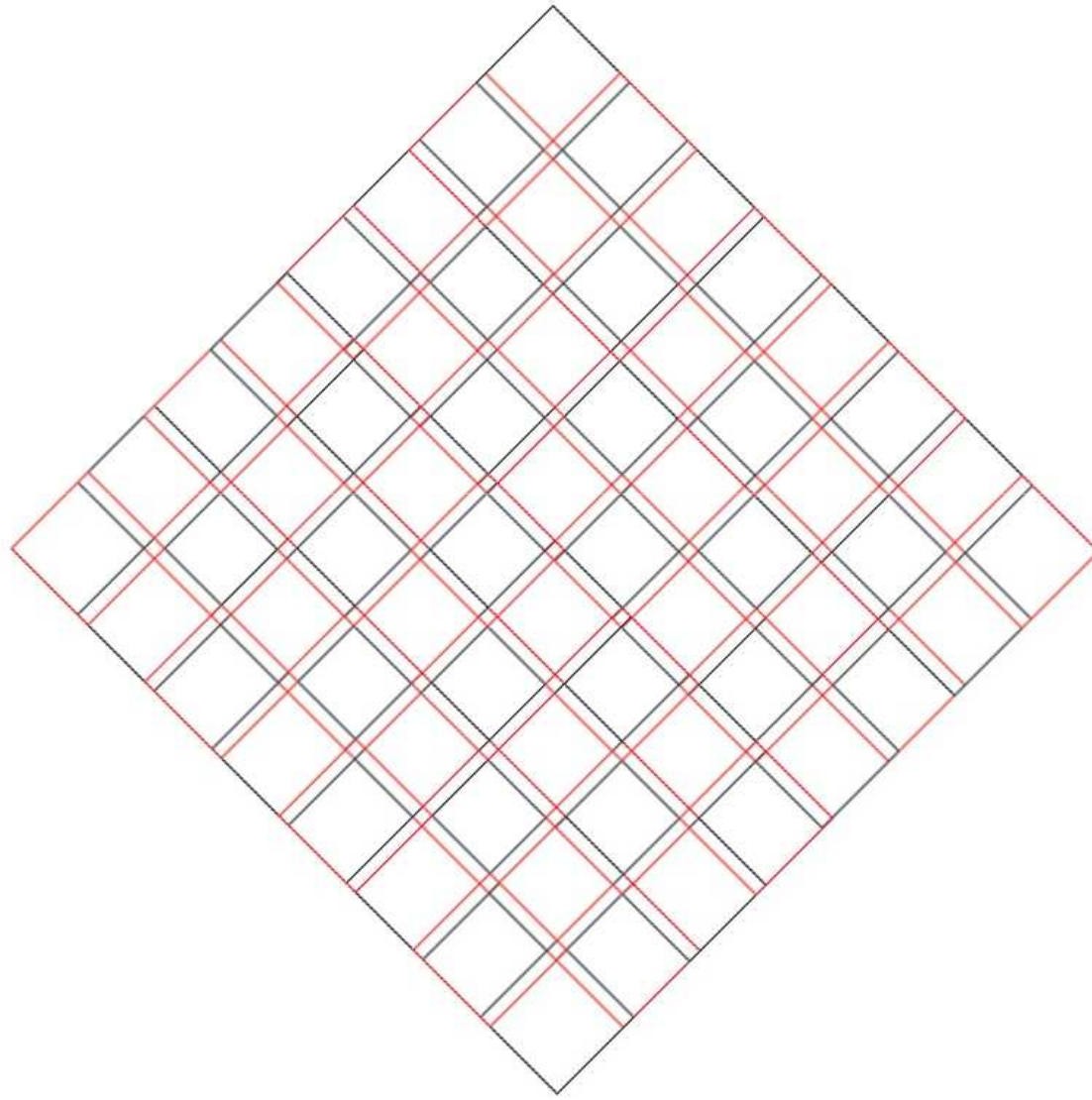
Wingsuit Formation Skydiving

A Proposal for USPA Recognition of Wingsuit Formation Records

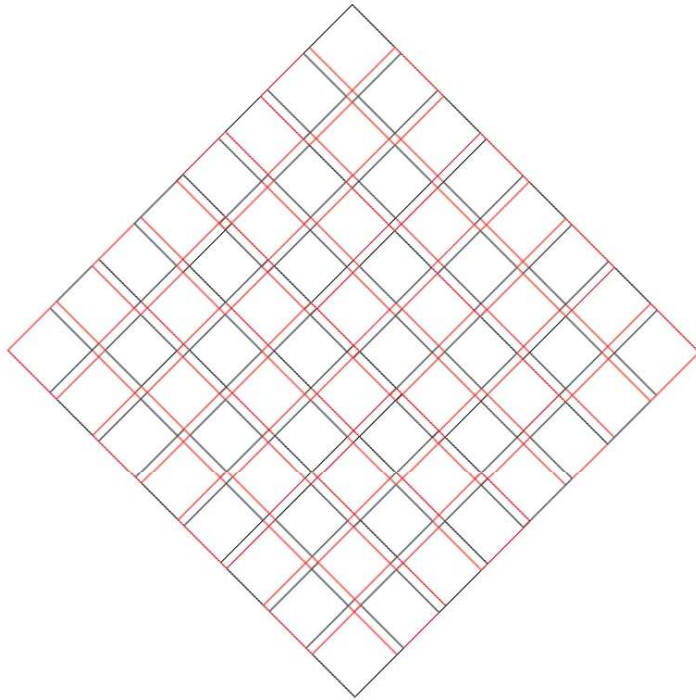


Presented by Taya Weiss (taya@raisethesky.org): USPA Board Meeting, Dallas, July 2009

Wingsuit Formation Judging Grid



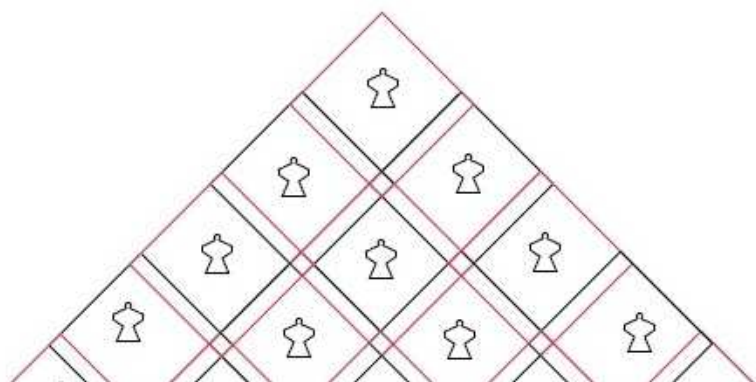
Grid Characteristics



- Diamonds approximate wingsuit shape
- Digital File easy to superimpose over photographs of formation
- Grid is scalable to fit over any size formation
- Overlapping red and black lines allow for additional margins of movement for each wingsuit flyer

- Easy to implement
- Simple judging criteria
- Fair standard

How to Judge Using the Grid



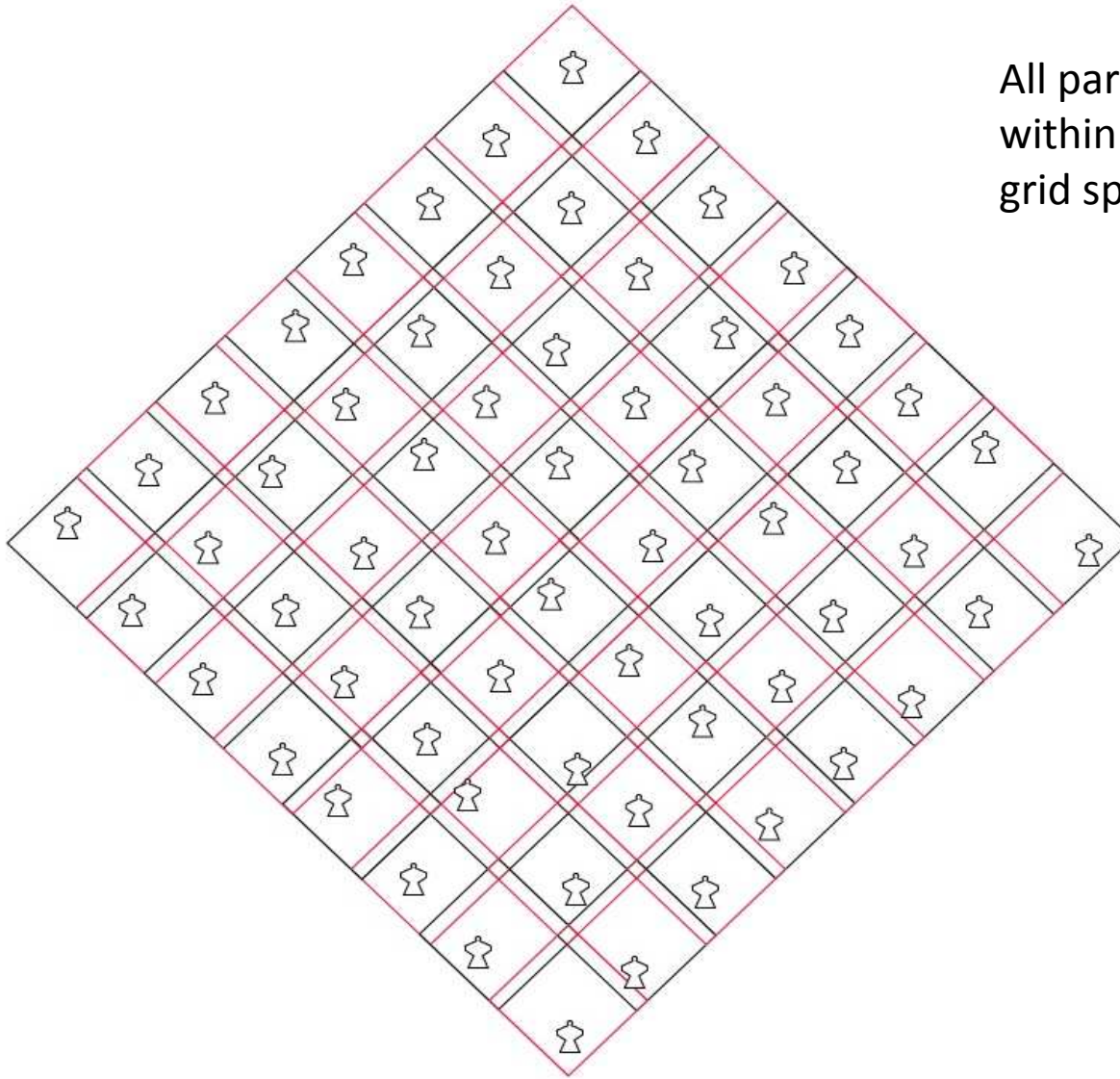
For a Record Application, organizers are **required** to submit:

1. One still photograph with all participants clearly visible in formation (preferably taken from underneath formation with sky as background)
2. Video of the jump (from exit to breakoff)

It is **recommended** to submit a schematic showing the intended formation

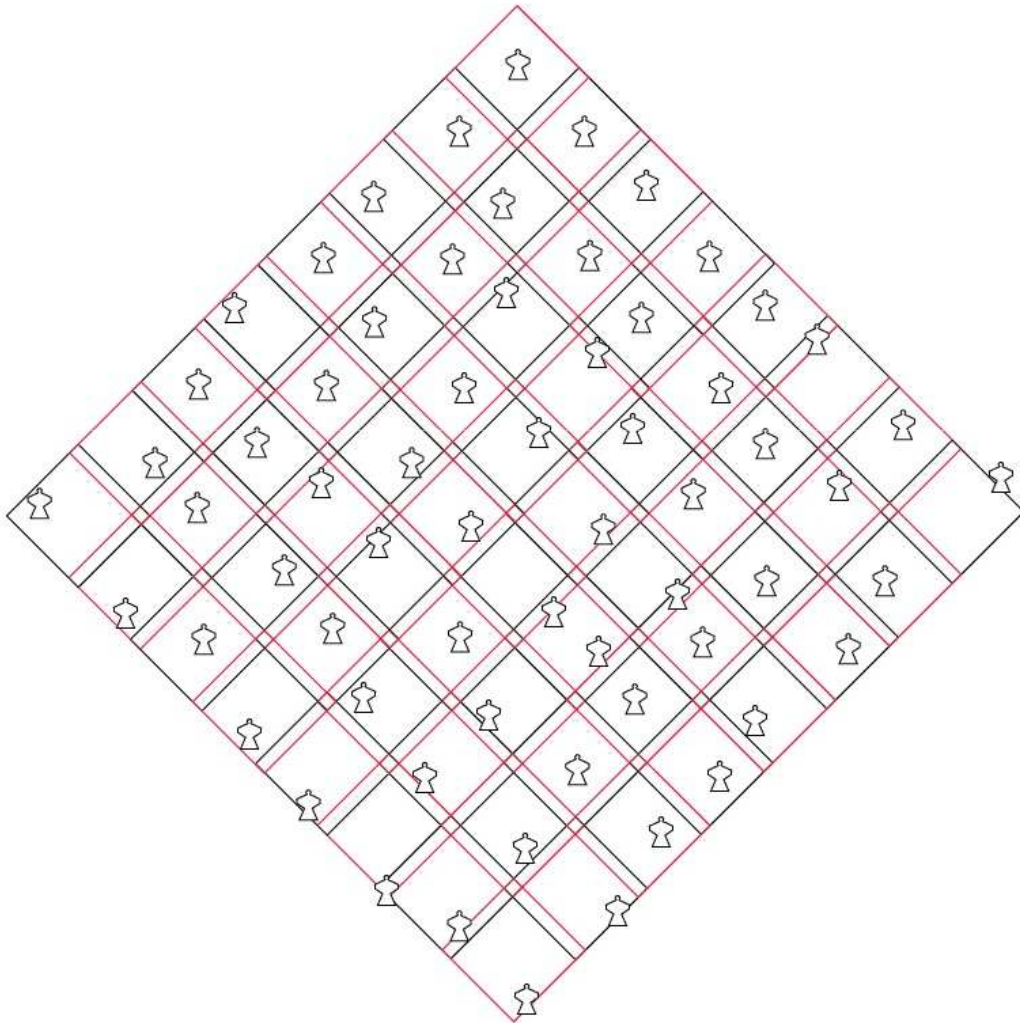
- Judges determine acceptability and authenticity of submission: clarity of photograph(s), inclusion of full video for continuity check
- Judges digitally place the grid over the still photograph(s) using Photoshop or a similar program, using a “best fit” standard.
- Each participant must have, at minimum, some part of their body **visibly inside** their assigned grid space.

Example 1: Symmetrical (Success)



All participants clearly
within their assigned
grid space

Example 2: Asymmetrical (Success)

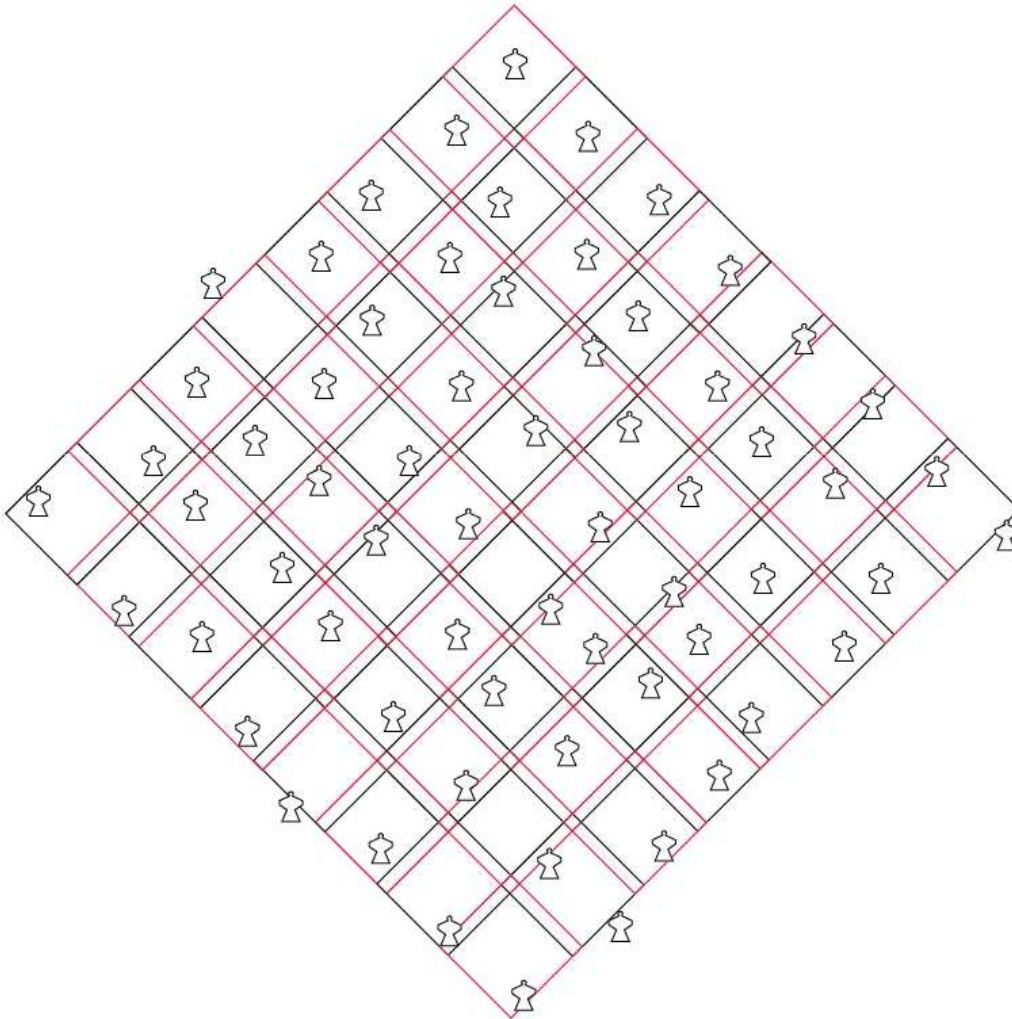


- Some participants close to the edges or partly outside their grid space

- Formation not perfectly symmetrical

- BUT - Each participant has part of their body visibly within their grid space.

Example 3: Asymmetrical (Failure)



- Some participants close to the edges or partly outside their grid space

- Formation not perfectly symmetrical

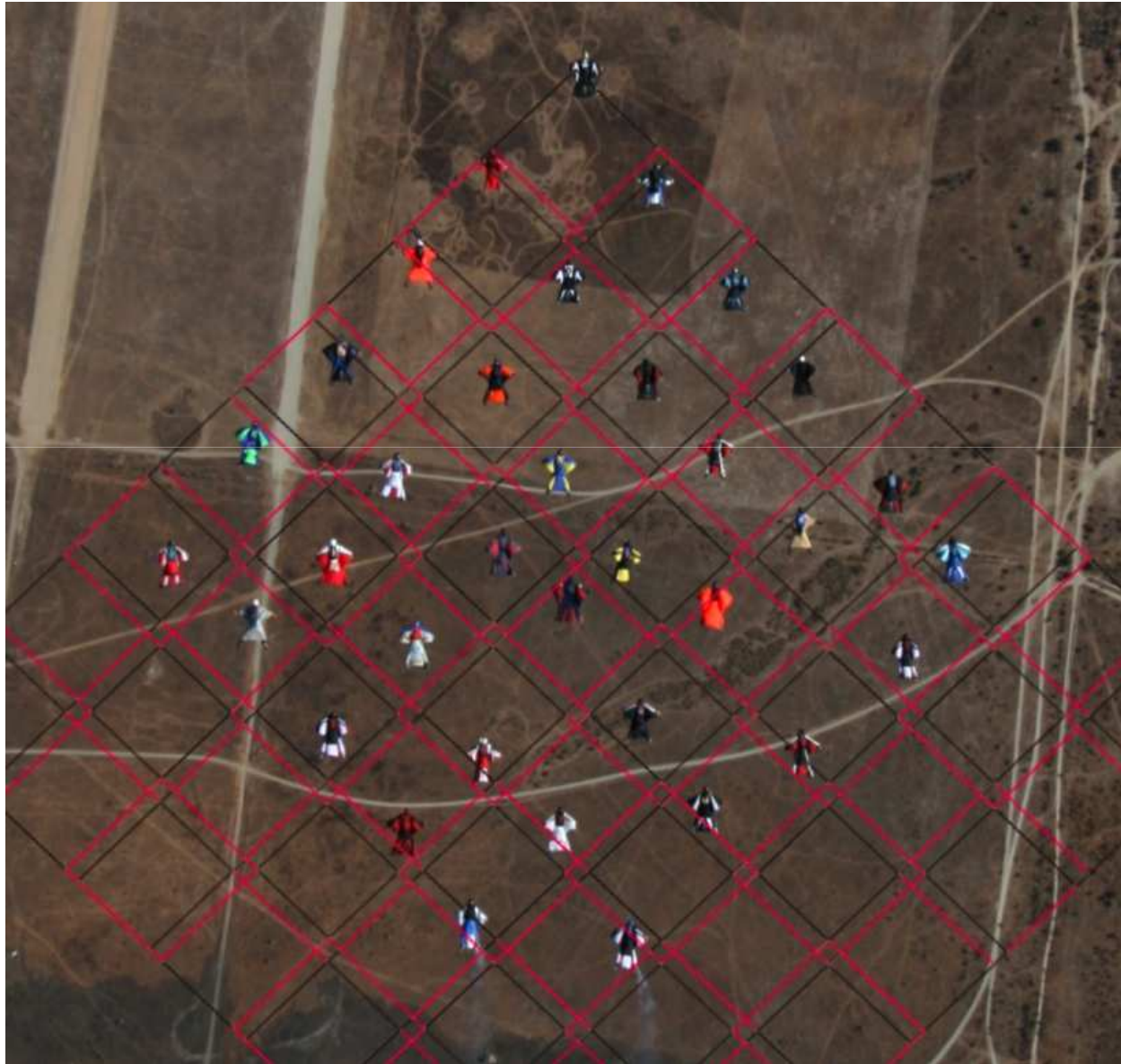
- At least two participants touching the line of their grid space, but no body part visibly inside the space.

- This is not a successful formation.

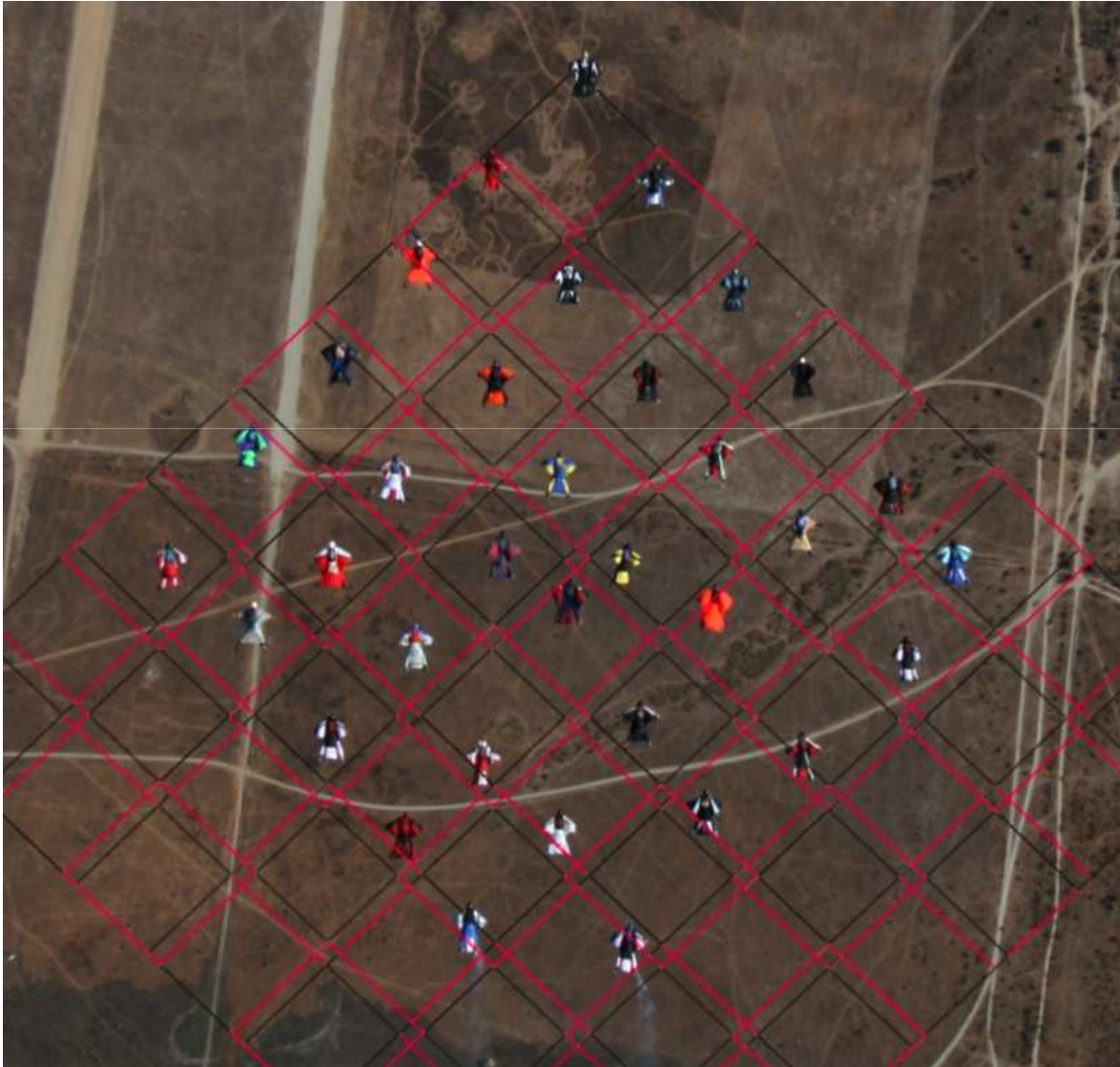
35-Way (as submitted for judging)



35-Way (with Grid): Successful



A note on the “Best Fit” Method



- Judges will place the grid over the formation in a way that attempts to fit all participants within their grid space.
- The “best fit” indicates that if there is a way all participants *can* fit within their grid spaces, the grid will be placed in that orientation.
- The “base” participant flying at the front of the formation is **not** required to be perfectly within their grid space (as seen in this picture).

Please Help Us Set Records!

Thank you for your consideration.

